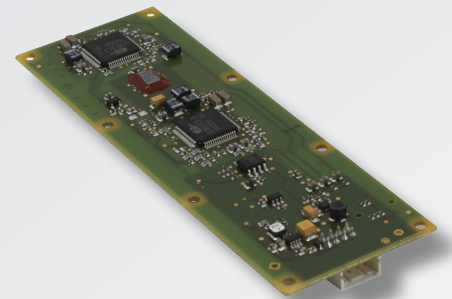
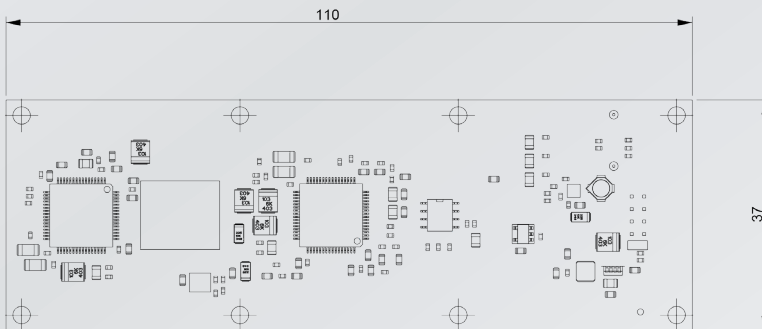
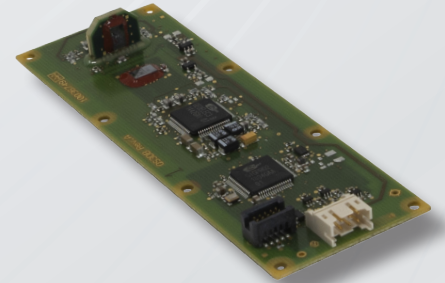
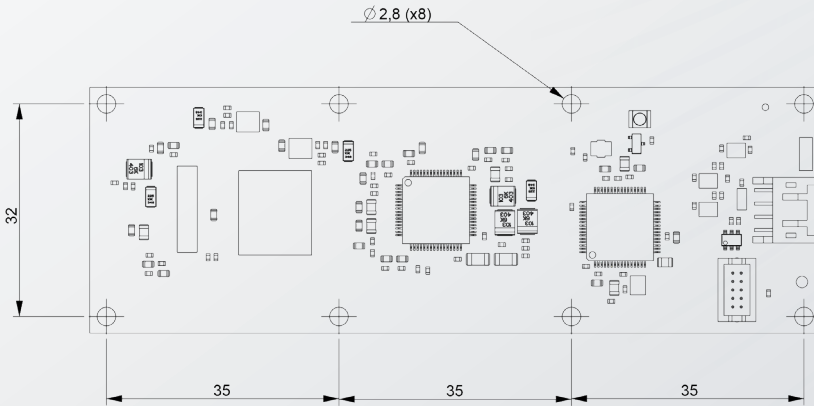


QS3 Specifications

GENERAL	
Sensor	<ul style="list-style-type: none"> • 3 Components Force balance MEMS capacitive accelerometer • Omni-tilt (gravity compensated)
Output	24 bits digital Output (UART)
Functions	<ul style="list-style-type: none"> • 3C Acceleration measurements • Data Filtering & Synchronization • Data transmission (data flow control) • Instruments tests : gain, phase, distortion • Sensor tests : noise, distortion, tilt, gravity
Sample rate	4, 2, 1 ms disciplined output on Pulse-Per-Second (PPS)
Low cut Filter	None, 0.15625 Hz, 0.3125 Hz, 0.625 Hz, 1.25 Hz, 2.5 Hz
Bandwidth	0-400 Hz
Full scale	5 m/s ²
Noise (10-200Hz)	< 30 ng/√Hz
System dynamic range	128 dB
Distortion	-90 dB
Tilt accuracy	±0.5° typ.
Orthogonality	±0.25°
Gain accuracy	< 0.25 %
Phase accuracy	< 20 μs
Power supply	3.7-5.5 Vdc
Power consumption	< 100 mW
Selectable I/O Bank Voltage	1.8 Vdc, 2.5 Vdc, 3.3 Vdc
Weight	< 20 g
Dimension (LxWxD)	110 x 37 x 15 mm
Operating temperature	-20 °C to 70 °C

Note: Sercel reserves the right to change its specifications without prior notice. All specifications are typical at 25 °C

Performances subjected to degradation in case of coupling with a EMC noisy system environment or poor mechanical integration



Sercel - France

16 rue de Bel Air
 B.P. 30439 - 44474 CARQUEFOU Cedex
 Téléphone: (33) 2 40 30 11 81
 E-mail: sales.nantes@sercel.com
 SAS au capital de 25 000 000 €
 Siège Social: 16 rue de Bel Air - 44470 CARQUEFOU
 378.040.497 R.C.S. Nantes Code APE 2651B

Sercel Inc. - U.S.A.

17200 Park Row
 Houston, Texas 77084
 Telephone: (1) 281 492 6688
 E-mail: sales.houston@sercel.com

www.sercel.com

© Sercel 01/22

