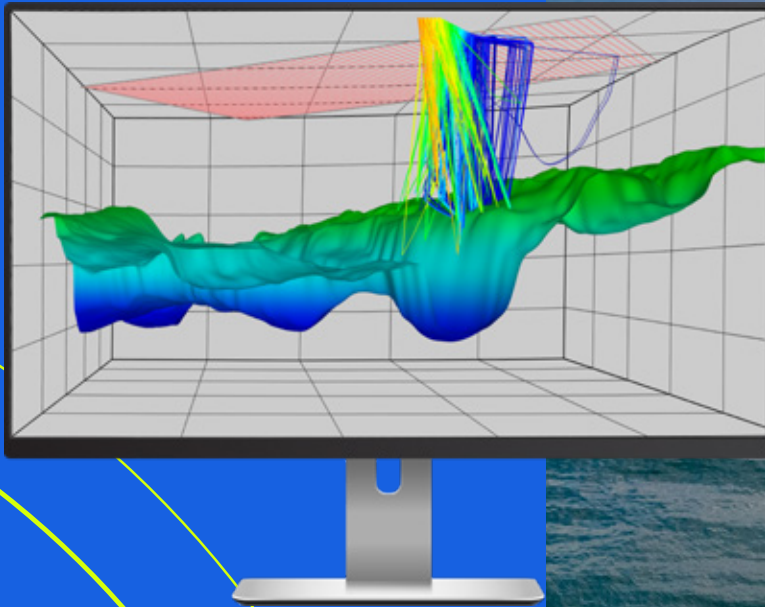




SERCEL

A Viridien Business



MESA[®] 17

SEISMIC SURVEY DESIGN SOFTWARE

MESA 17

Seismic survey design software

MESA 17 was developed in collaboration with key customers to meet the most challenging requirements of modern, large-scale seismic surveys.

➤ Architectural changes for high-density seismic projects

- Optimized drawing for discrete graphics cards
- Workflow changes to improve fold calculation efficiency
- 10x – 100x improvement in shooting speed
- Restructuring of lengthy calculations
- Support for projects with millions of source and receiver points

➤ Time-based shooting templates

- Import shot acquisition times
- Import deployment and retrieval time windows for receivers
- Create active shooting patch based on receivers deployed when shot was taken
- Support for multiple deployment windows per receiver
- Works for land or ocean bottom projects

➤ New edit modes for viewing survey status at a selected date and time

➤ P6/11 export

➤ Perimeter generation based on bin grid, fold values, and source/receiver extents

➤ Graphical selection of sail lines for detour creation

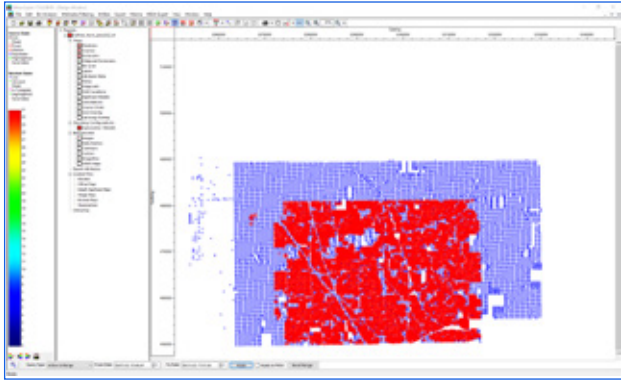
- Automatic regeneration of shot points after detour creation

➤ Batch calculation of sets of offset-limited bin attributes

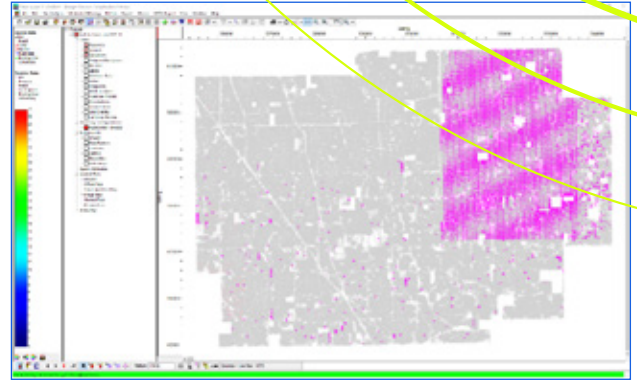
➤ Batch recalculation of existing bin attributes after survey modification

➤ Support for left and right-handed bin grids

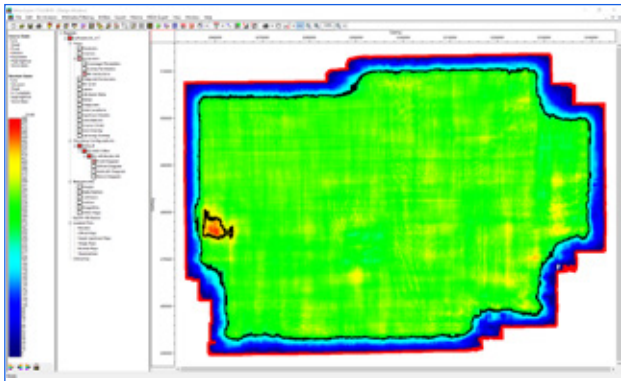
➤ Extraction of elevations or water depths from the NOAA global relief model



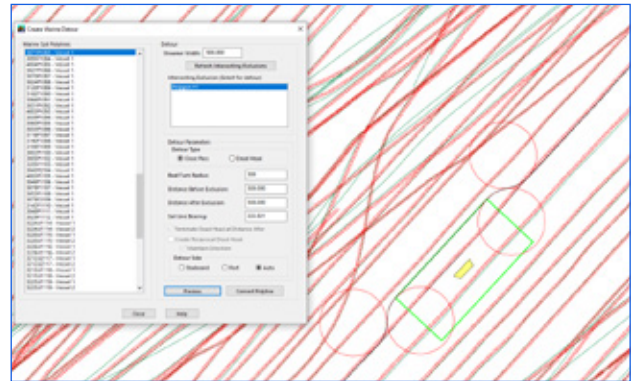
Define multiple deployment and retrieval time windows for receivers. View survey status at any point in time.



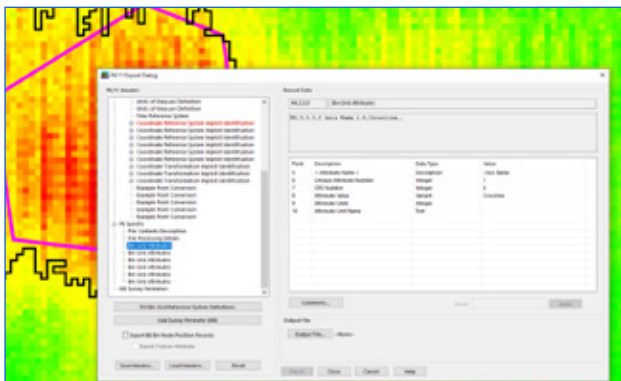
Create the active shooting patch based on the receivers deployed when each shot was taken.



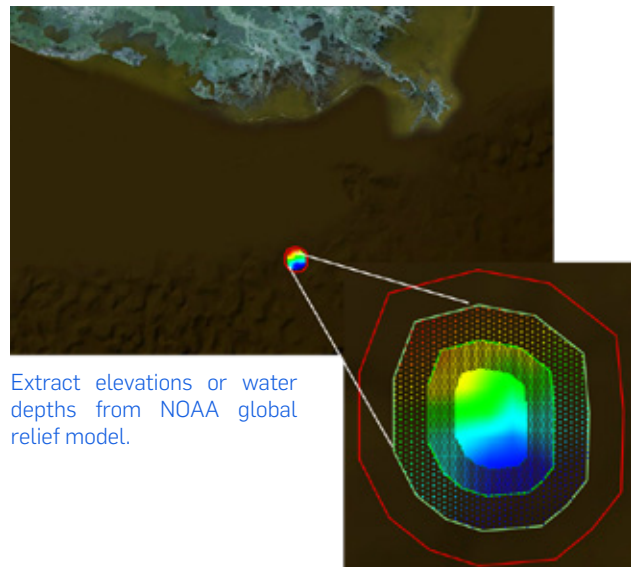
Generate perimeter polygons based on the bin grid, fold values, and source/receiver extents.



Automatically regenerate marine shot points after creation of sail line detours.



P1/11 export of survey geometry data. P6/11 export of the bin grid and fold coverage regions.



Extract elevations or water depths from NOAA global relief model.

SERCEL CONCEPT

Beaverbank Business Park Logie Green Road
1 Logie Mill - Edinburgh EH7 4HG, Scotland
Telephone : (44) 131 557 5595
E-mail : cs1-sales@sercel.com

SERCEL - FRANCE

16 rue de Bel Air
B.P. 30439 - 44474 CARQUEFOU Cedex
Téléphone : (33) 2 40 30 11 81
E-mail : sales.nantes@sercel.com
SAS au capital de 25 000 000 €
Siège Social : 16 rue de Bel Air - 44470 CARQUEFOU
378.040.497 R.C.S. Nantes Code APE 2651B

SERCEL INC. - U.S.A.

17200 Park Row
Houston, Texas 77084
Telephone : (1) 281 492 6688
E-mail : sales.houston@sercel.com

www.sercel.com

© Sercel 06/24

Produced according to the Sercel environmental printing standard

