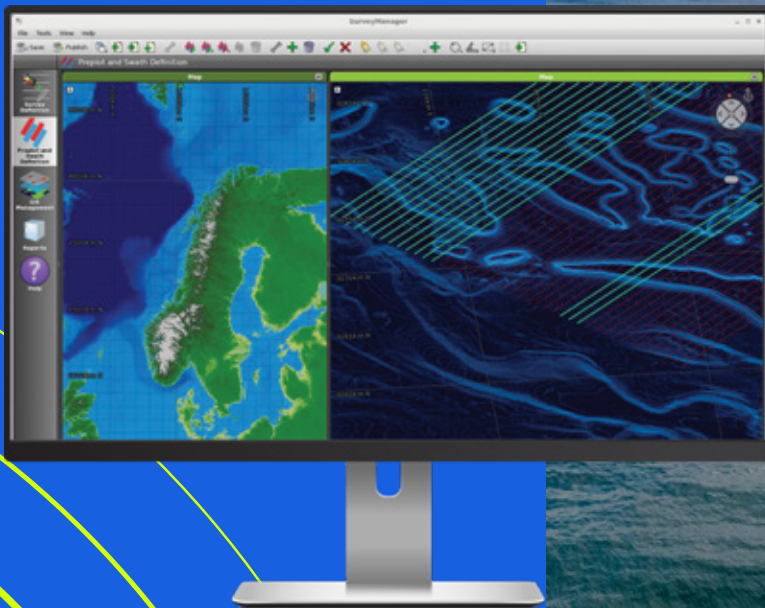




SERCEL
A Viridien Business



Gator™

SEABED NAVIGATION SOFTWARE

COMMAND & CONTROL FOR SEABED, TZ AND EM OPERATIONS

Setting the industry standard for nearly 20 years and with more than 20 licenses globally, the Gator seabed navigation, Command & Control software is designed to meet the unique challenges of distributed, multi-vessel ocean bottom (OBC, OBN), transition zone (TZ), and electromagnetic (EM) data acquisition. The system is extremely flexible and is scalable to configure and control operations ranging from single vessels to highly complex, multi-vessel and multi-system projects.

- › Real-time positioning, Command & Control for seabed operations
- › Reduces the costs of operations
- › Continually evolving technology based on close client collaboration
- › Full 24/7 customer support
- › Expert training personnel and facilities

- › ROV and “node-on-a-rope” support
- › Cable asset mapping
- › Multi-vessel auto-synchronized configuration
- › Integration with Marlin
- › Rugged interfacing and radio solutions (RIU)
- › Extensive QC and reporting

IMPROVE EFFICIENCY

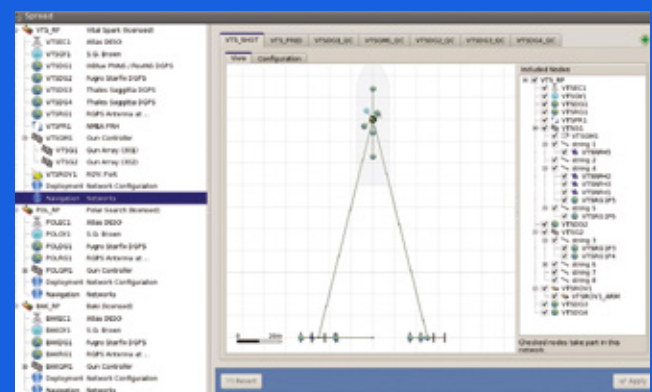
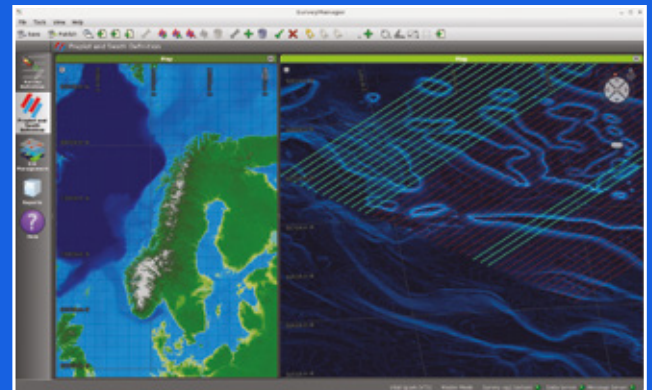
- Survey-wide view of all vessels
- Extremely flexible and scalable
- Distributed data management and control, supporting wide range of multi-vessel activities
- Integration with the Marlin™ SIMOPS and ice-management system

MINIMIZE ACQUISITION COSTS

- Multi-vessel, auto-synchronized configuration supporting large vessel counts
- Real-time operational planning and optimization based on field conditions
- Cable asset mapping
- ROV and “node-on-a-rope” support

REDUCE HSE, OPERATION AND EQUIPMENT FAILURE RISKS

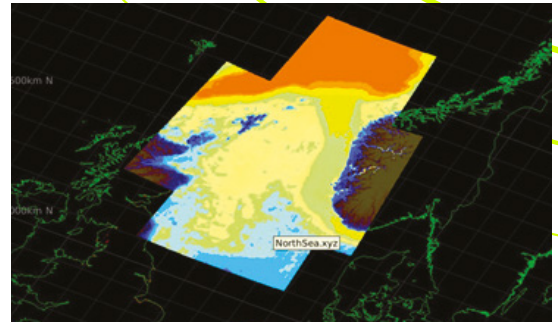
- Extensive quality control and assurance measures
- Automated diagnostics, QC, and reporting
- Rugged interfacing and radio solutions



KEY CAPABILITIES

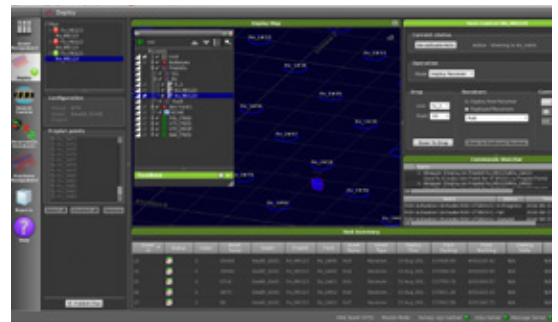
REAL-TIME SURVEY MANAGEMENT

Comprehensive real-time survey management with full visibility of all vessels and activities, plus efficient positioning solutions for sources and receivers deliver optimized acquisition operations.



MULTI-VESSEL OPERATIONS

Safe, efficient operations around in-field obstacles and infra-structure with flexible master/ slave vessel roles.



ENHANCED DIAGNOSTICS AND QC

Enhanced diagnostics and automated alarm-based QC to pinpoint specific concerns and to effectively address and correct issues.

SURVEY-WIDE DELIVERABLES AND CONSISTENT, CUSTOMIZED REPORTS

A broad range of deliverables, including attributes and reports, are automatically generated in customizable formats.

LEADING EDGE PRODUCT ARCHITECTURE AND HARDWARE

Centralized data management and control simplifies and automates processes. Rugged hardware is suitable for harsh, exposed environments.



SERCEL CONCEPT

Beaverbank Business Park Logie Green Road
1 Logie Mill - Edinburgh EH7 4HG, Scotland
Telephone : (44) 131 557 5595
E-mail : csl-sales@sercel.com

SERCEL - FRANCE

16 rue de Bel Air
B.P. 30439 - 44474 CARQUEFOU Cedex
Téléphone : (33) 2 40 30 11 81
E-mail : sales.nantes@sercel.com
SAS au capital de 25 000 000 €
Siège Social : 16 rue de Bel Air - 44470 CARQUEFOU
378.040.497 R.C.S. Nantes Code APE 2651B

SERCEL INC. - U.S.A.

17200 Park Row
Houston, Texas 77084
Telephone : (1) 281 492 6688
E-mail : sales.houston@sercel.com

www.sercel.com

© Sercel 06/24

Produced according to the Sercel environmental printing standard

