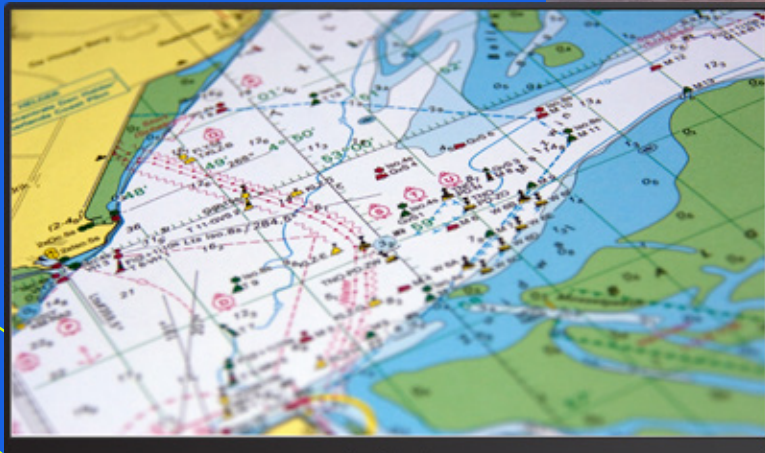




SERCEL

A Viridien Business



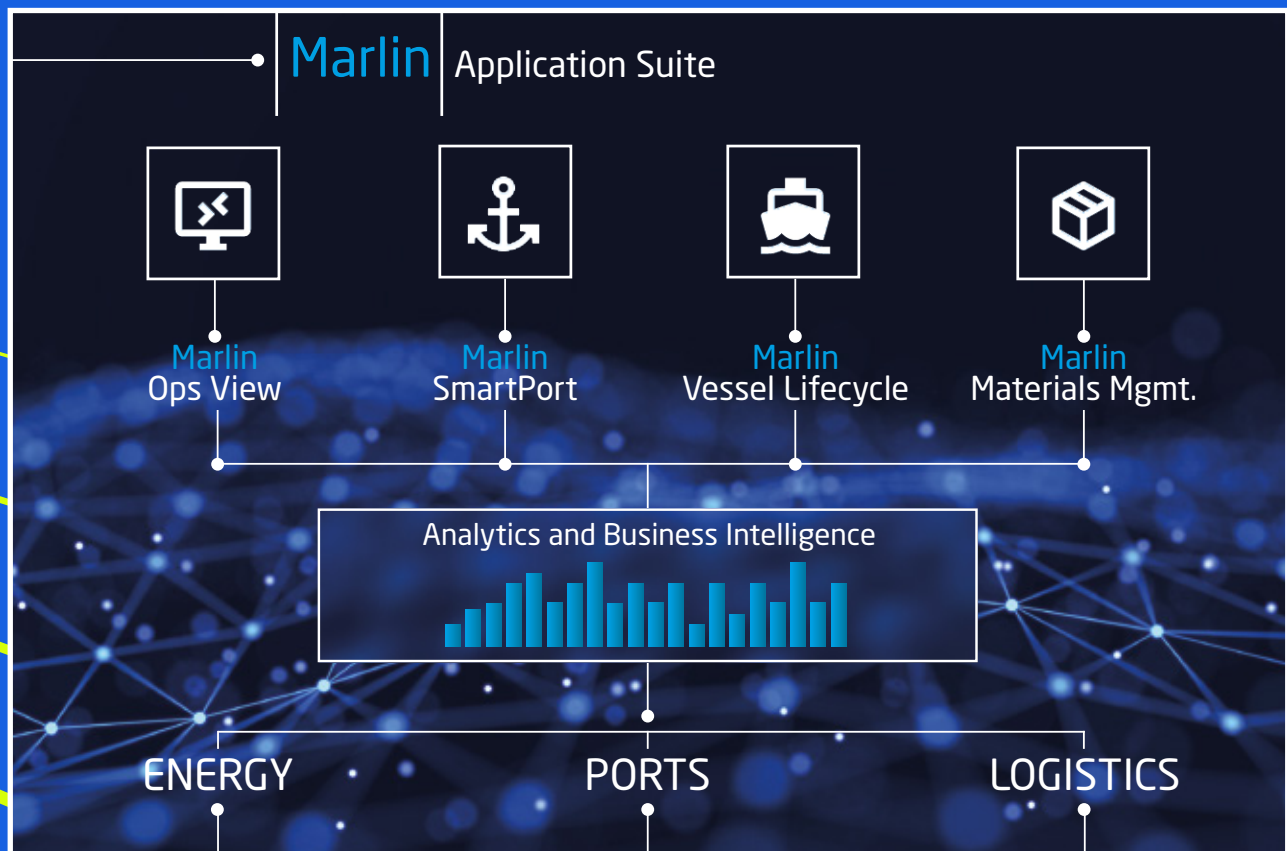
Marlin™

APPLICATION SUITE

SMARTER MANAGEMENT OF YOUR OFFSHORE OPERATIONS

The Marlin Application Suite provides a portfolio of innovative software and services for the marine industry, including energy, port, and logistics. Marlin enables companies to plan, monitor, analyse, and manage all operational logistics via a single web portal, accelerating innovation and transforming their business into a truly digital enterprise in a secure and cost-effective manner. The unique, modular architecture of the Marlin Application Suite enables customers to choose the functionality that best meets their operational needs at any given time while also allowing for future scalability.

- › Improve efficiency and reduce costs
- › Increase collaboration
- › Streamline asset management processes



MARLIN OPS VIEW

Real-time situational awareness solution that enables proactive management of all ongoing and planned operations. Full history of activity is recorded, with time-sliding capability giving audit reporting on the operational area.
Avoid potential conflicts where expensive assets are involved and delays are extremely costly.

MARLIN SMARTPORT

Port Management Information System (PMIS) that gives control over port call activities, reducing vessel downtime in port, and ensuring HSE compliance.
Leveraging the power of data to increase port call efficiency.

MARLIN VESSEL LIFECYCLE

Vessel database and contract management that maintains accurate records, ensuring that vessels are fit for purpose, and comply with deployment regulations.
Log accurate and up-to-date vessel records for the management of fleet capacity; manage certifications; track and complete vessel pre-hire checklists for safe and efficient preparation.

MARLIN MATERIALS MANAGEMENT

Marlin provides a set of user-friendly planning tools that ensures optimal vessel efficiency by managing material requests and scheduling, and by reducing vessel downtime through route optimization.
Efficient asset utilisation enables operators to meet deadlines, cut costs, and reduce their carbon footprint.

MARLIN ANALYTICS AND BUSINESS INTELLIGENCE

Analytics and key operational performance metrics are delivered through sophisticated dashboards, providing users with invaluable insights for optimising their operations.
Reporting statistics can be tailored to the needs of each team.



SERCEL CONCEPT

Beaverbank Business Park Logie Green Road
1 Logie Mill - Edinburgh EH7 4HG, Scotland
Telephone : (44) 131 557 5595
E-mail : csl-sales@sercel.com

SERCEL - FRANCE

16 rue de Bel Air
B.P. 30439 - 44474 CARQUEFOU Cedex
Téléphone : (33) 2 40 30 11 81
E-mail : sales.nantes@sercel.com
SAS au capital de 25 000 000 €
Siège Social : 16 rue de Bel Air - 44470 CARQUEFOU
378.040.497 R.C.S. Nantes Code APE 2651B

SERCEL INC. - U.S.A.

17200 Park Row
Houston, Texas 77084
Telephone : (1) 281 492 6688
E-mail : sales.houston@sercel.com

www.sercel.com

© Sercel 06/24

Produced according to the Sercel environmental printing standard

