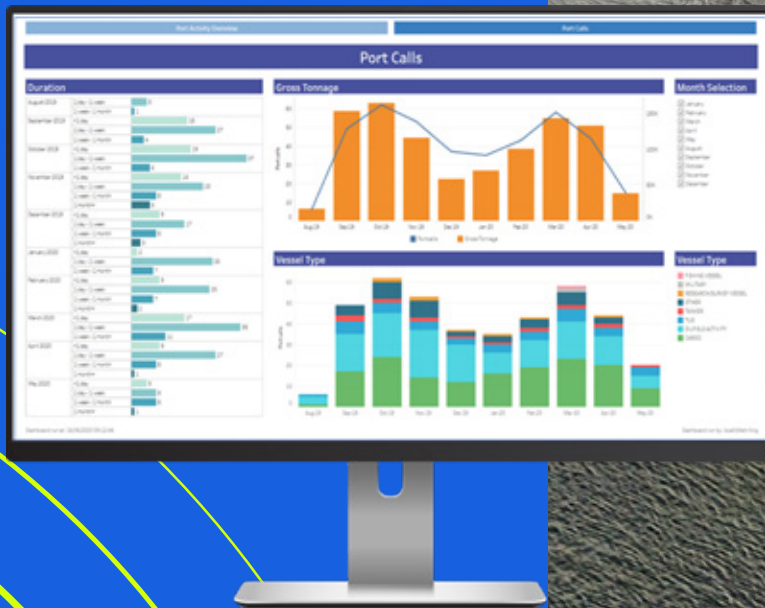




**SERCEL**  
A Viridien Business



# Marlin SmartPort™

PORT MANAGEMENT INFORMATION SYSTEM (PMIS)

Digital port solutions from trusted partners

# Marlin SmartPort

The digitalization of ports does not have to be confusing

- There are a number of options, but off-the-shelf solutions do not always meet your port's requirements
- Select a dependable system that can expand with you as your port evolves
- Choose a trustworthy partner for your digital journey

Marlin SmartPort PMIS was created from the ground up by Sercel Concept in collaboration with global port clients and international standards organizations to deliver a solution that is simple to use and scalable to your port's needs.

With over 60 years' experience in the most complex maritime technologies, Sercel Concept is your trusted partner on the journey to make your port the smartest port around.

Our experienced team of software engineers and maritime professionals is dedicated to providing you with the best possible project governance that is logical, robust, and results-driven. Our team will invest time in talking to you, learning about your port and your port's needs, in order to transform your requirements into a custom-tailored solution that is effective and produces results quickly.

## WHAT OUR CLIENTS SAY:



*“Marlin SmartPort helps us to be the smartest port around. The exciting move to Marlin SmartPort is a major leap forward for the Montrose Port Authority, replacing manual port operation procedures with an efficient, integrated digital system.”*

Tom Hutchison,  
CEO, Montrose Port Authority



*“Sercel Concept is our long-term partner. The main advantage of working with Sercel Concept is the relationship that we managed to build with them. It is kind of invaluable, really. They have an understanding of our operations at CalMac, and that understanding has grown as time has gone on through the developmental piece with the company.”*

Cameron MacPhail,  
Head of Ports & Harbours, CalMac Ferries Ltd

## TO LEARN MORE, CONTACT:



Todd Neely  
Americas  
todd.neely@sercel.com



Peter Aslett  
EMEA – Europe, Middle East, and Asia  
peter.aslett@sercel.com

**Marlin SmartPort PMIS enables ports to effectively manage their port calls, from the initial booking by an agent or vessel to the final invoicing — all through a single, simple-to-use portal.**

**Key features include:**

- **Partner Portal** allows for efficient online port call booking by agent or vessel, including the digital upload of pre-arrival forms.
- **Berth Allocation** and management tools for port controllers to optimize berth use.
- **Environmental Monitoring** tools enable real-time weather and tidal awareness for stakeholders.
- **Automated Monitoring** of vessel ETAs lets ports amend plans effectively.
- **Automated Lookup** including recording of vessel dimensions, draught, main and auxiliary propulsion systems, and steering information over the course of the port call.
- **Real-time Vessel Movement Tracking** in the port area gives port controllers a live overview of activities.
- **Logging and Timestamping** of all port call vessel activities for reporting, HSE and billing purposes.
- **A Suite of Dashboards** provides key performance data to port management and key stakeholders on demand.
- **Automated Port Call** automatically creates port calls for high-frequency visits and low-paperwork vessel types, including fishing boats, ferries, and crew transfer vessels (CTVs).
- **Language Feature** - Marlin SmartPort's digital port management solution can be used by non-English speakers thanks to its multi-language functionality.

**Marlin SmartPort works with a variety of third-party systems including Terminal Operating Systems (TOS), ERP / finance solutions, pilotage software, and planning management tools.**



*“It’s not just about providing clients with dependable port management solution,” says Stuart Darling, SVP Software and Services, Sercel Concept.*

*“Sercel Concept has a long history of collaborating with our clients to truly understand their data and how they intend to maximize the impact of that information. We work closely with our clients to define their processes, objectives, and key performance indicators (KPIs) in order to tailor our solutions to help them grow.”*

To learn more visit:  
[www.sercel.com/Marlin](http://www.sercel.com/Marlin)

You can also contact us at  
[csL-sales@sercel.com](mailto:csL-sales@sercel.com)





#### **SERCEL CONCEPT**

Beaverbank Business Park Logie Green Road  
1 Logie Mill - Edinburgh EH7 4HG, Scotland  
Telephone : (44) 131 557 5595  
E-mail : csl-sales@sercel.com

#### **SERCEL - FRANCE**

16 rue de Bel Air  
B.P. 30439 - 44474 CARQUEFOU Cedex  
Téléphone : (33) 2 40 30 11 81  
E-mail : sales.nantes@sercel.com  
SAS au capital de 25 000 000 €  
Siège Social : 16 rue de Bel Air - 44470 CARQUEFOU  
378.040.497 R.C.S. Nantes Code APE 2651B

#### **SERCEL INC. - U.S.A.**

17200 Park Row  
Houston, Texas 77084  
Telephone : (1) 281 492 6688  
E-mail : sales.houston@sercel.com

[www.sercel.com](http://www.sercel.com)

© Sercel 06/24

Produced according to the Sercel environmental printing standard

