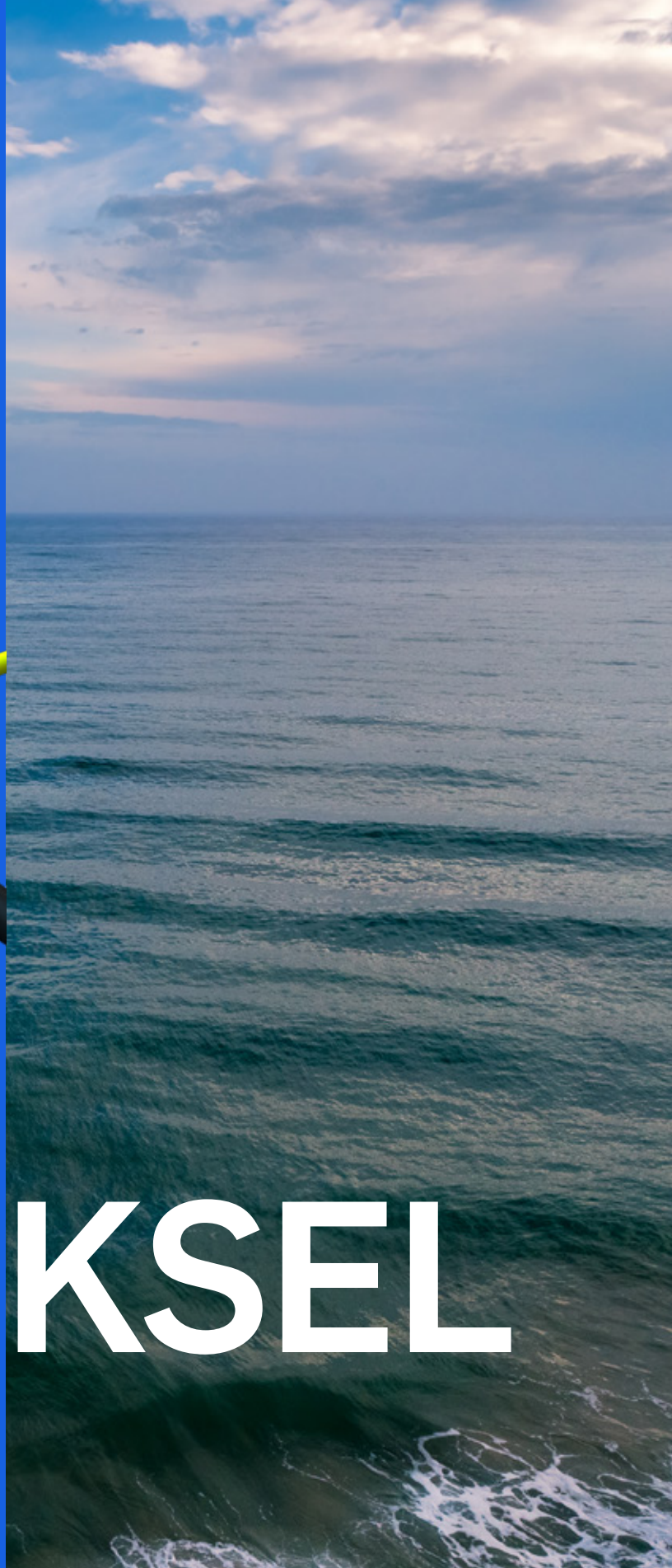
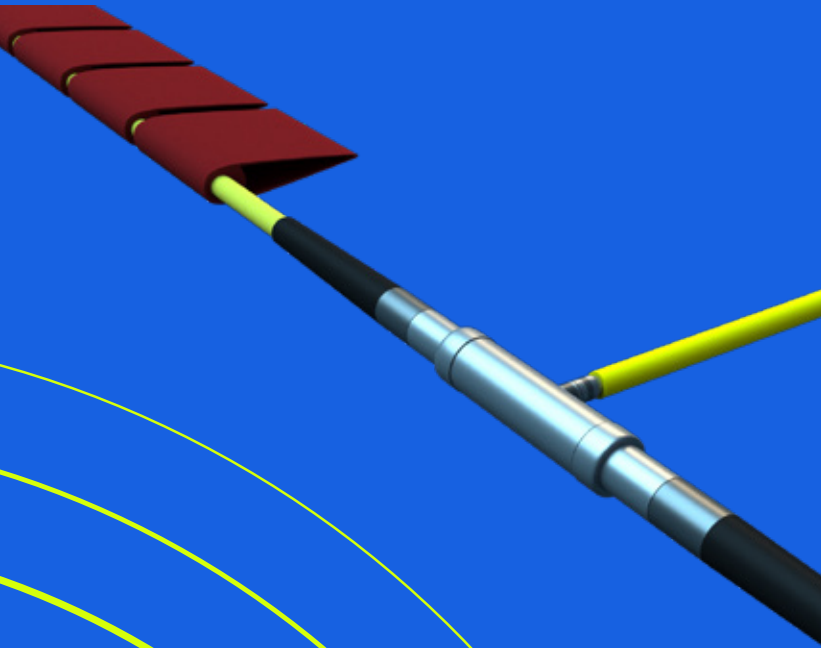




SERCEL

A Viridien Business



PIKSEL

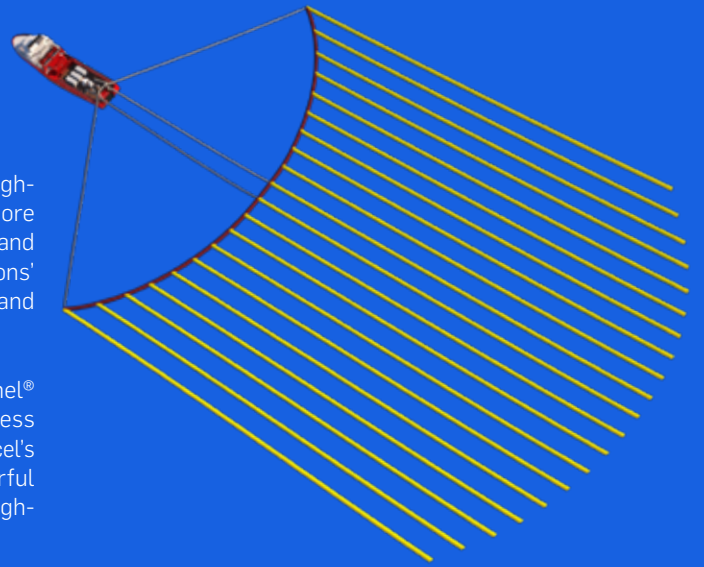
HIGH-RESOLUTION 3D
SEISMIC SOLUTION

KAPPA **K.**
OFFSHORE SOLUTIONS

PIKSEL

PIKSEL is an integrated and compact solution that enables high-resolution seismic data acquisition in targeted areas for offshore construction and field development. It combines the reliability and flexibility of Sercel's marine equipment with Kappa Offshore Solutions' engineering expertise in offshore seismic equipment integration and hydrodynamic modeling.

The new solution is compatible with the entire range of Sentinel® streamers that are widely recognized for their outstanding robustness and signal fidelity. PIKSEL can also take advantage of QuietSea™, Sercel's Passive Acoustic Monitoring (PAM) system, Nautilus®, its powerful streamer positioning solution and SeaProNav Suite, a complete high-performance navigation platform.



BEST DATA QUALITY

Better signal

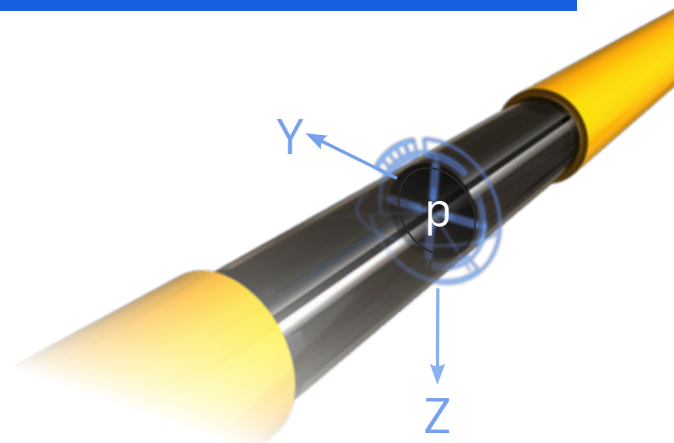
Leveraging the tremendous performance of the solid streamer sensor's high vibration isolation, PIKSEL offers the best signal to noise ratio with unprecedented low frequency performance.

For further enhanced broadband imaging, the 3-C multi-sensor streamer, Sentinel MS, is highly recommended as it offers an additional vector measurement to enable easy removal of the ghost effect due to sea surface reflection.

Less noise

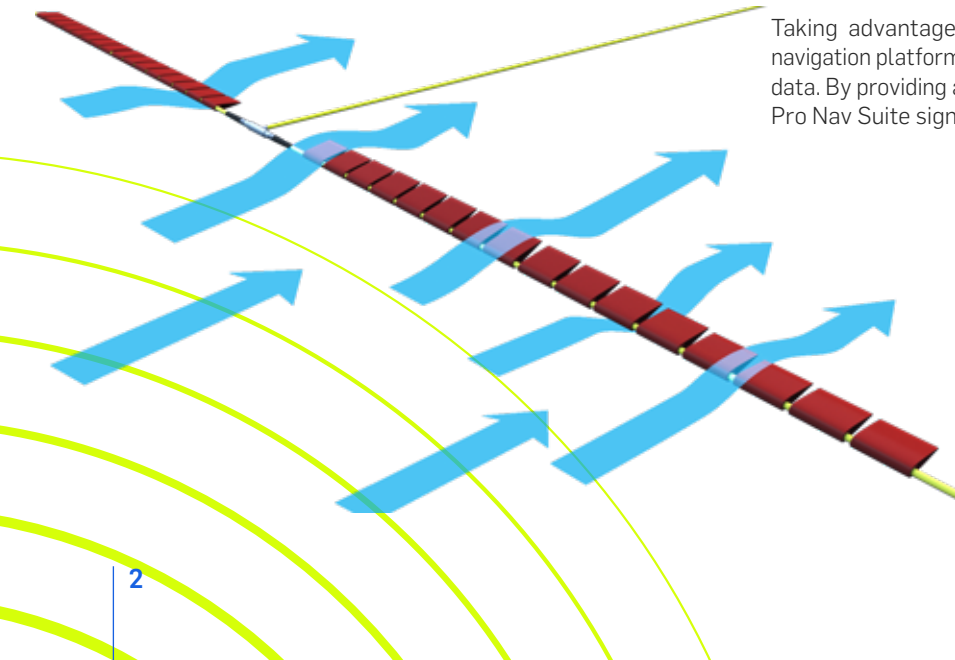
PIKSEL's in-sea rigging has been designed to achieve optimized hydrodynamic performance and the best vibration isolation. This involves the full integration of acoustic modules and cross cables along with a system wide reduction in tension.

Coupled with Kappa's tailor made rigging design this allows the in-sea equipment to be towed deeper, thereby minimizing swell noise even in rough seas.



Improved positioning accuracy

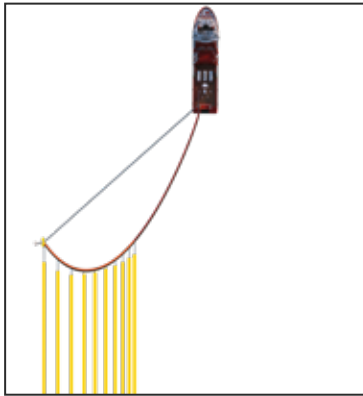
Taking advantage of SeaPro Nav Suite, Sercel's high-performance navigation platform, PIKSEL also ensures unequalled accurate positioning data. By providing an automatic qualification of network positioning, Sea Pro Nav Suite significantly enhances the productivity of such surveys.



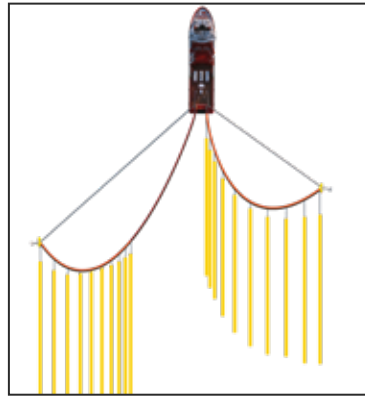
HIGHER PRODUCTIVITY

Reduced downtime

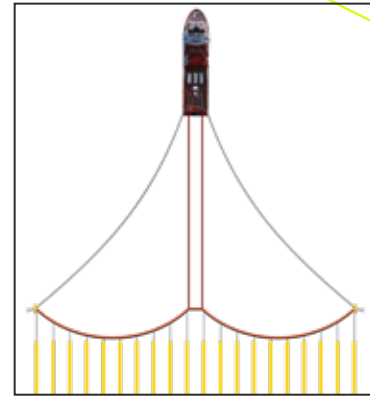
An ingenious method for deployment of the streamers on each side of the survey vessel guarantees ease of deployment & recovery, minimizes risk of entanglement, equipment downtime and repair costs.



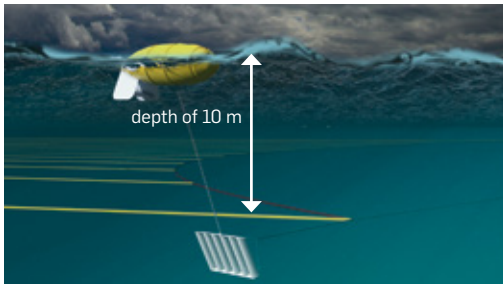
Stage 1: first-side deployment



Stage 2: second-side deployment



Stage 3: side merge



Enlarged operational weather window

The ghost removal capability of the Sentinel MS and Kappa's innovative rigging design are a powerful combination that enables an unrivalled tow depth of 10 meters (more than 3 times deeper than existing solutions) and which allow for continuous data acquisition even during rough sea conditions.

Faster survey acquisition

Thanks to vibration reduction and noise isolation, tow speeds of up to 5 knots are possible, up until now tow speed has generally been limited to under 4 knots. More efficient deck operations and limited crew downtime also allow for faster survey completions.

IMPROVED OPERATIONAL EFFICIENCY

Environmental compliant system

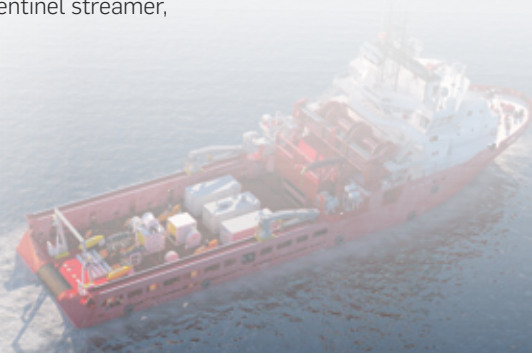


PIKSEL is compatible with Sercel's QuietSea mammal monitoring solution.

This is a Passive Acoustic Monitoring (PAM) system that automatically detects the precise position of marine mammals. Seamlessly integrated within the Sercel Sentinel streamer, QuietSea greatly streamlines onboard operations.

Adapted to all types of vessels

Flexible, PIKSEL's hardware was designed to suit different types and sizes of vessels. Compact and modular, the containerized solution enables quick installation onboard vessels of opportunity.



SERCEL - FRANCE

16 rue de Bel Air
B.P. 30439 - 44474 CARQUEFOU Cedex
Téléphone : (33) 2 40 30 11 81
E-mail : sales.nantes@sercel.com
SAS au capital de 25 000 000 €
Siège Social : 16 rue de Bel Air - 44470 CARQUEFOU
378.040.497 R.C.S. Nantes Code APE 2651B

SERCEL INC. - U.S.A.

17200 Park Row
Houston, Texas 77084
Telephone : (1) 281 492 6688
E-mail : sales.houston@sercel.com

www.sercel.com

© Sercel 06/24

Produced according to the Sercel environmental printing standard

